

**MODEL 68K966K6 BUCKTECH™ TOWER HARNESS SIZING PROCEDURE**

Height	Chest Size					
	34 - 36	38 - 40	42 - 44	46 - 48	50 - 54	56 - 60
5'4" - 5'7"	S	S	M	L	X	XX
5'8" - 5'11"	S	M	L	X	XX	XXX
6'0" - 6'3"	M	M	L	X	XX	XXX
6'3" +	L	L	X	X	XX	XXX

**1S = Extra Small**  
**S = Small**  
**M = Medium**  
**L = Large**  
**X = Extra Large**  
**2X = XX Large**  
**3X = XXX Large**

**A.** Using a seamstress tape or tape measure, measure users height and chest size. Chest size is measured around chest and back directly under the armpits across the breast.

**B.** Using the Body Belt Sizing chart on the right, determine the correct D-size for the user.

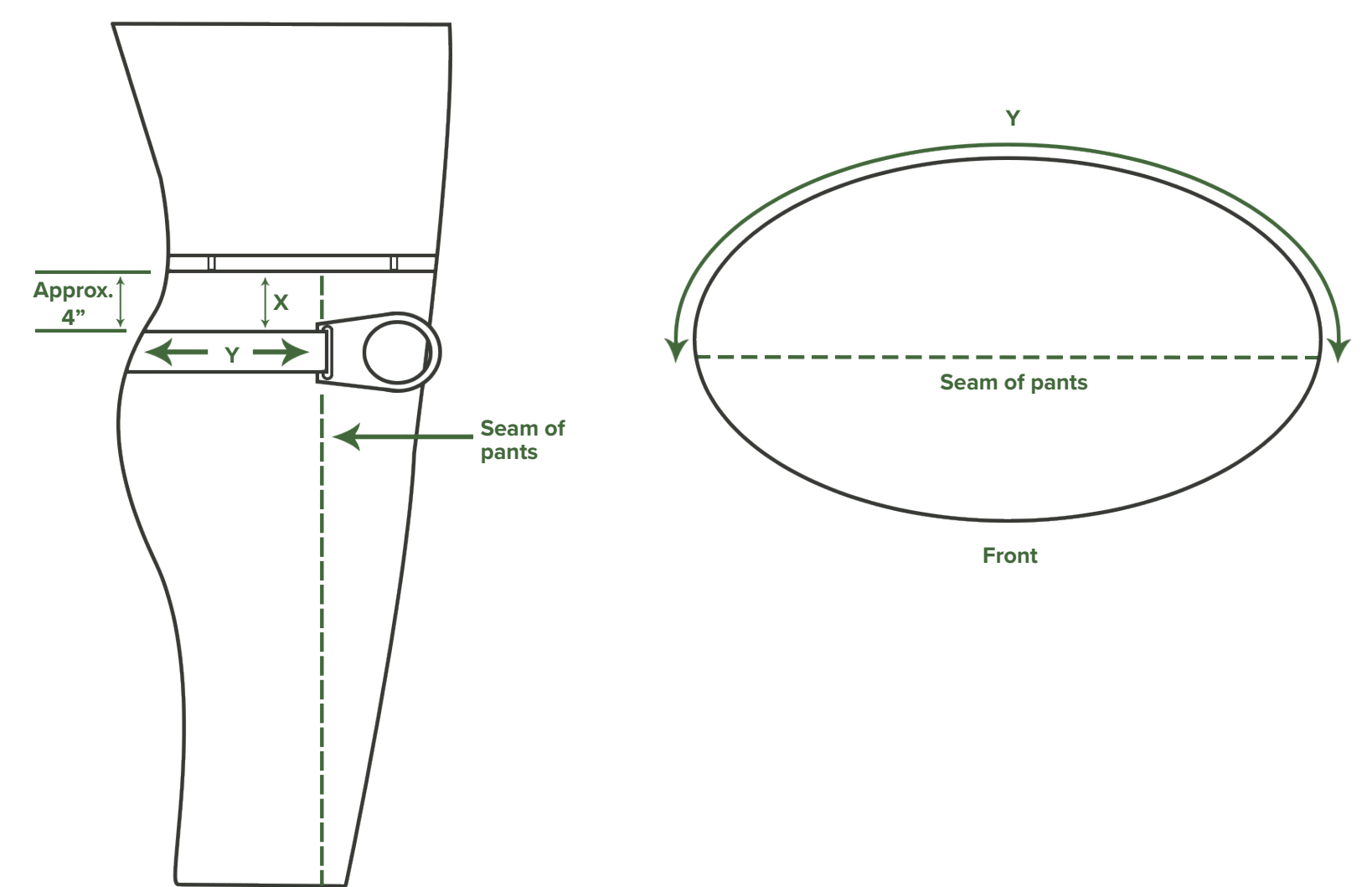
- Determine your 'Y' measurement (see method and diagram on the right).
- Find your 'Y' measurement, then move across the row to the column that has your waist size. (ex.: Your 'Y' measurement is 24" and you want a medium Tower Harness Body Belt).

**C.** Record desired part number & size based on information obtained above. Example; user is 5'10" with a 40" chest and a 24" D-Ring size, they would order 68K966K6-M.

Tape Measurement / Sizing Belt Measurement	Y Measurement	D-Ring Size	Waist Size
		17	19
	18	20	1S
	19	21	1S
	19	21	S
	20	22	S
	21	23	S
	21	23	M
	22	24	M
	23	25	M
	23	25	L
	24	26	L
	25	27	L
	25	27	X
	26	27	X
	27	29	X
	27	29	2X
	28	30	2X
	29	31	2X
	29	31	3X
	30	32	3X
	31	33	3X

Green Numbers = Standard Sizes  
Red Numbers = Non Standard Sizes

**X** - Distance from waist to top of hip bone where body belt is typically worn.  
**Y** - Measurement is from front of hip bone, around the back and to the front of the other hip bone (Typically from seam to seam of pants).



**Note:** To ensure proper body belt sizing, always take your Dee (Y) measurement using a tape or sizing belt. Never rely on you current body belt Dee size.

**FULL BODY HARNESS INSPECTION**  
BEFORE EACH USE, IT IS IMPORTANT TO CHECK FOR THE FOLLOWING:

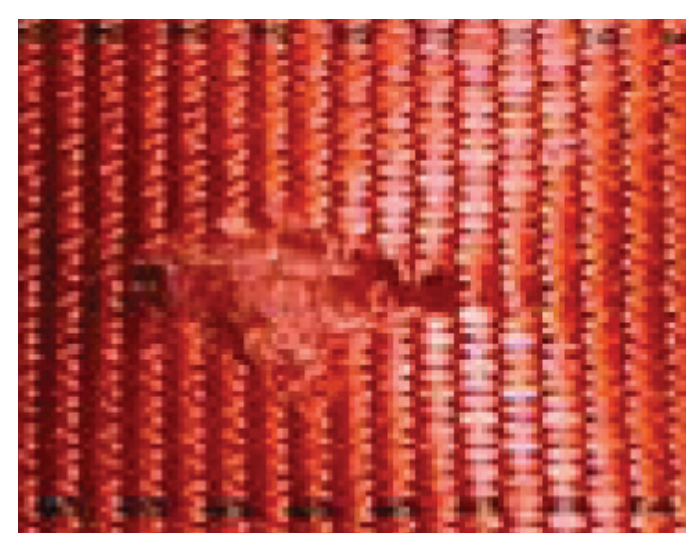
**WEBBING**

- Cuts
- Burns or charring
- Cracks
- Evidence of shock load to harness
- Kinks
- Broken fibers
- Excessive wear
- Abrasions
- Swelling
- Discoloration
- Chemical/Physical exposure
- Loose, cut or missing stitching
- Chest strap Hook & Loop have sufficient adhesion
- UV degradation

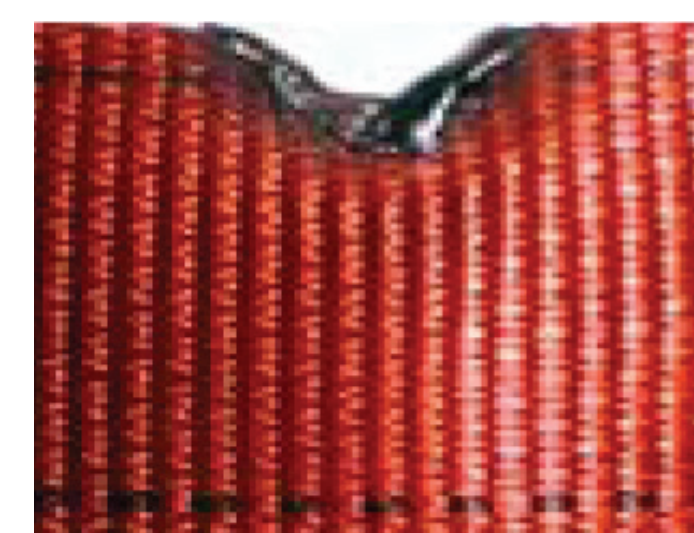


**HARDWARE**

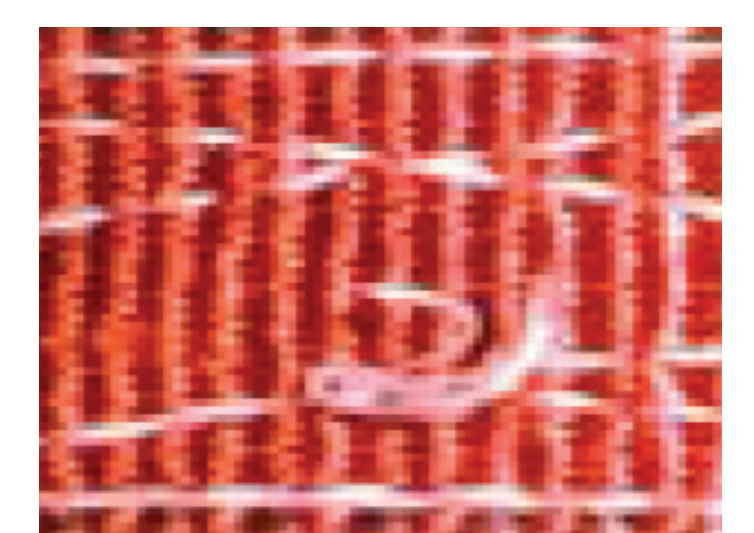
- Cracks or nicks
- Quick connect buckles operate properly
- Distorted/Bent
- Moderate to server rust or corrosion



Cuts



Burns



Stitching



Chemical



Broken



Severe Rust/Corrosion

**IF ANY OF THESE CONDITIONS EXIST CEASE USE IMMEDIATELY!**