

BUCKINGHAM MFG.

Buck Easy-Just Adjustable Positioning Lanyard (APL) Instructions / Warnings

“Buck Easy-Just” 7/16” Kernmantle rope. Manufacturing matrix material option “8X” (see Fig.1)

Inspect Prior to Each Use: inspection should include but not be limited to the following:

Rope Inspection:

- Inspecting your rope should be a continuous process of observation before, during, and after each use.
- Inspect rope fibers for signs of excessive wear, burns, cuts, abrasions, kinks, knots, hockling, ice buildup, broken strands in any given area of the rope.
- If ice or snow build-up is noted, remove build-up prior to use by running the length adjusting device along the length of the rope. Ensure the length adjusting device is clean and free of packed snow or ice.
- Both outer and inner fibers contribute to the ropes strength. If either is worn, the rope will naturally be weakened. Open the rope strands and look for powdered fiber, which is one sign of internal rope wear.
- Inspect the rope for frayed strands and broken yarns. Check for pulled strands. A pulled strand should be re-threaded into the rope if possible, otherwise it may snag on a foreign object during use.
- Inconsistent texture or stiff areas can indicate excessive dirt / grit embedded in the rope or shock load damage. Check that rope has not become hard or compacted. A hard or compacted rope indicates reduced strength.
- Inconsistent diameter (flat areas, bumps, or lumps). This condition indicates core or internal damage from overloading or shock loading.
- With use, all ropes become dirty. Inspect for areas of discoloration that could have been caused by chemical contamination and may result in the rope becoming brittle or stiff.
- Glossy or glazed areas that generally indicate signs of heat damage.
- Rope stitching is free of defects. Stitched eyes must have a protective cover (shrink tube) over the stitching and the cover must not be damaged, missing or torn. (see Fig. 2).
- Do not use lanyard that has the ropes warning center / core exposed.



See below photo for examples of a variety of conditions indicated above that require product replacement:



Hockled Rope



Rope with a Pulled Strand



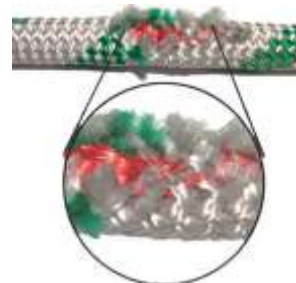
Rope with Broken or Cut Strands



Melted / Glossy / Glazed Strands



Rope with Excessive Abrasion Wear



Rope with Warning Center (Red) Exposed

Snap Hook / Carabiner Inspection:

- Ensure locking device and keeper / gate operates freely and smoothly and that keeper / gate closes and remains closed and locked until intentionally opened.
- Inspect to ensure component is free of cracks, distortion, corrosion, or nicks.
- Ensure keeper / gate is not bent, is free of burrs, not packed with snow or ice, and is clean and functioning properly.

Length Adjusting Device (LAD) Inspection:

- Unit is free of cracks – (usually depicted by fine jagged lines) and extensive wear or corrosion to cam, or housing.
- Lanyard is properly installed into LAD, snap end of lanyard exits the LAD next to release tab (Fig. 3).
- Proper operation of mechanism by pivoting release lever back and forth. Movement should be unrestricted with no binding. Binding could be caused by burrs, packed snow, or ice.

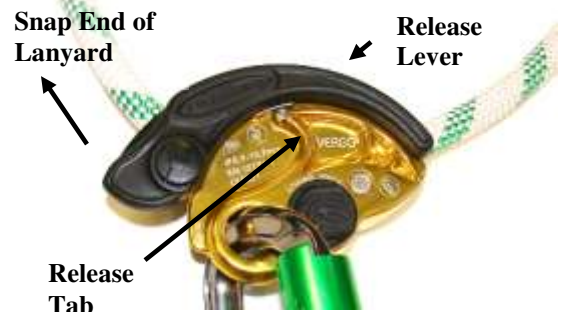


Fig. 3

NOTE: Also, read and follow other instructions, warnings, and inspection guidelines enclosed with this product.

If any evidence of wear or deterioration as outlined above is observed, immediately cease use, destroy the product, and replace it with new equipment. Should any unusual conditions not outlined above be observed, or you have reasonable doubt about a particular condition, remove the equipment from service and notify your Supervisor, Safety Director, or contact Buckingham Mfg. Co. for clarification. Failure to carefully and completely inspect your equipment could result in serious injury or death.

Warnings:

- Know the job and the regulations governing performance requirements and select the proper equipment.
- Read carefully, understand, and heed these and all other included instructions, warnings, and cautions before using this equipment. Failure to do so could result in your serious injury or death. Should questions arise concerning the proper use or condition of your equipment, contact Buckingham Manufacturing Co. at 1-800-937-2825.
- All affixed labels should be left in place and all instructional material kept for future reference.
- This equipment is intended for use by properly trained professionals only.
- This product is designed to be used by a person with a maximum weight of 350 lbs. when fully equipped.
- For personal use only. NOT for towing or hoisting.
- Fall protection equipment, (i.e. fall arrest, work positioning belts, climbers, retrieval, suspension etc.) should not be resold or provided to others for re-use after use by original user as assurance cannot be granted that a used product meets criteria of applicable standards and is safe for use to a subsequent user.
- Be certain this equipment is suitable for the intended use and work environment. It should only be used as personal protection equipment (PPE). If suitability for intended use is in doubt, consult a safety engineer or contact Buckingham Mfg. before using.
- Destroy any and all equipment subjected to impact loading.
- Always attach each snap hook / carabiner of the Adjustable Positioning Lanyard to the proper D-ring of the body belt.
- Do not attach work positioning snap hooks / carabiner to accessory rings. Accessory rings are intended for attachment of a belt supporter only. Note: Belt supporters are intended to distribute belt weight of users who carry an unusually heavy load of tools. Belt supporters are not intended to support the weight of the user.
- As outlined by OSHA 1926.502 (e)(2) positioning devices shall be secured to an anchorage capable of supporting at least twice the potential impact load of an employee's fall or 3,000 lbf. (13.3 kN), whichever is greater.
- Product is manufactured to meet the following standards / regulations as they are applicable:
 - ASTM F887 / OSHA 1926.959 / CA. OSHA 2940.6.
- The Adjustable Positioning Lanyard is only one component / element of a positioning system outlined by ASTM F887.
- Avoid contact of this equipment with sharp edged or pointed tools, high temperature surfaces, welding or other heat sources. (Be aware of the lanyards position / placement on the pole or tree at all times in relation to the operations being performed. Use extreme caution when performing operations such as cutting, drilling, sawing, etc. Always perform this type of work well above the lanyard to avoid the potential of tool contact with the lanyard, causing damage which may result in a fall, serious injury or death).
- Guard against debris which could block the action of the cam (pebbles, twigs, ice, snow, etc.).
- If ice or snow buildup is noted, run the adjusting device along the length of the rope to remove the build-up and ensure the adjusting device is clean and free of packed snow or ice.
- Only Buckingham Mfg. Co., or those authorized in writing by Buckingham Mfg. Co., may make repairs to this equipment.
- Remove from service if subjected to impact loading. Even though no visible signs are present, internal damage may have occurred thus reducing its strength and margin of safety.
- This product is intended for work positioning only.

- LAD must not be used on steel cable or wire rope.
- Holding the Release Lever of the LAD in the open position, will result in the rope to continue to feed through the unit. Therefore in the event of a cutout, the LAD Release Lever must be released for rope to stop feeding through LAD.
- Never wrap an Adjustable Positioning Lanyard around a sharp member as the material could be cut or damaged.
- The optional wear guard is intended for use on poles, trees, and other structures to minimize wear (i.e. abrasion, cuts, etc.) to the rope. Ensure the wear guard is adjusted properly to cover all contact points of pole, tree, or structure.
- With each use, visually check that the Adjustable Positioning Lanyard snap hook / carabiner freely engages each body belt positioning D-ring and that the keeper / gate is completely closed and facing outward. Never rely solely on the feel or sound of a snap hook / carabiner engaging.
- Ensure each snap hook / carabiner is positioned so that its keeper / gate is never load bearing.
- When in the work position, ensure there is no pressure on the snap hook locking mechanism sufficient to depress it, as this will due to its length, render it incompatible with currently designed D-rings and make it very susceptible to rollout.
- Lubricate lock mechanism and keeper on both sides of snap hook at least weekly or as often as required to maintain smooth operation (no binding) with light weight lubricant such as WD-40®.
- Product covered under these instructions / warnings should not be resold / redistributed or re-used after use by original user.

Disconnecting / Reconnecting Length Adjusting Device (LAD) onto Rope: Unless the Adjustable Positioning Lanyard rope line which includes locking snaphook and stitched eye is replaced or LAD requires cleaning, it is not to be disassembled. Notes: Only use LAD on compatible and proper diameter replacement ropes supplied by Buckingham. Buckingham LADs have been tested and approved for use as Length Adjusting Devices only when used on the following replacement ropes PN 9+R08X18W6, 9+R08X110W6 and 9+R08X115W6.

Disconnecting LAD

1. Remove carabiner from LAD attachment hole (Fig. 4a – 4b)
2. Open face plate of LAD (Fig. 5)
3. Rotate the handle into the open position (Fig. 6)
4. While holding the handle in the open position remove rope from LAD (Fig. 7)

Fig. 4a



Fig. 4b



Fig. 5



Fig. 6



Fig. 7



Connecting LAD

1. Open face plate of LAD (Fig. 8)
2. Rotate the handle into the open position (Fig 9)
3. Insert rope into channel on inside of LAD. The snap end side of the lanyard must be on the point of the arrow side of the LAD, following the arrow on the inside of the rope channel (Fig. 10a – 10b)
4. Close face plate of LAD and reconnect carabiner to LAD (Fig. 11)

Fig. 8



Snap End of Lanyard

Tail End of Lanyard

Fig. 9



Fig. 10a



Tail End

Snap End of Lanyard

Fig. 10b



Fig. 11



It is imperative that you perform a trial test while standing on the ground to ensure the LAD properly grips the rope / locks prior to climbing.

Adjustable Positioning Lanyard Attachment: (options & hardware may vary from product shown below)

Proper Attachment



Fig. 12

Examples of Improper Attachment 



Fig. 13



Fig. 14

Proper Attachment: connecting hardware of APL must be attached to work positioning D-rings of your body belt as shown in Fig. 12. Gates of the carabiner and locking snaphook must be facing out.

Examples of Improper Attachment: Do not connect Adjustable Positioning Lanyard back onto itself and use as a cinch or choking device (Fig. 13). Do not connect lanyard to a single work positioning D-ring (Fig. 14)

To Operate:

1. Ensure Adjustable Positioning Lanyard is properly attached by holding onto the pole and leaning back slowly into the unit. Unit should support user.
2. To shorten the Adjustable Positioning Lanyard, lean slightly towards the pole, tree, or other structure while pulling the free end of the rope through the LAD. (Fig. 15).
3. To lengthen the Adjustable Positioning Lanyard, slowly rotate the release lever towards your body until the rope feeds through the LAD, lengthening the lanyard, release lever to stop at your desired position (Fig. 16). Use caution when lengthening device as the LAD will not stop until the lever is released or you reach the sewn termination at the end of the lanyard.
Alternate method to lengthen Adjustable Positioning Lanyard: lean slightly towards the pole, tree, or other structure, grasp housing of LAD and rotate entire device away from you as you rotate your hip backwards lengthening the lanyard (Fig. 17).
4. While using the Adjustable Positioning Lanyard, adjust length to minimize fall distance to under two feet (2').



Fig. 15



Fig. 16



Fig. 17

Cleaning / Storage Instructions:

A dirty product should be washed and rinsed in clean water, then dried. Do not store near solvents, corrosive chemicals or at extreme temperatures. Inspect your equipment carefully before use. This product should be stored in a clean and dry environment out of direct sunlight and away from extreme climate conditions. Ropes should be stored on racks or hooks to provide ventilation and should never be stored on concrete or dirt surfaces.

BUCKINGHAM MFG. CO.

1-800-937-2825

E-mail – sales@buckinghammfg.com

Web site – www.buckinghammfg.com

Information contained in these written instructions supersedes all other information (written, audio, video etc.) produced by Buckingham Mfg. prior to the revision date of this document.