

# BUCKINGHAM MFG.

## Flange Instructions

### WARNINGS / INSTRUCTIONS

Warning: Do not use this product if you cannot understand and follow the instructions and warnings that come with it and complete all necessary functions.

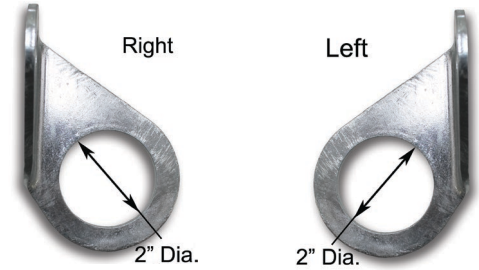
Flange Part Numbers:

- 30R-F1, 30R-F2, 30R-F3, 30R-F4
- 30L-F1, 30L-F2, 30L-F3, 30L-F4

Note: R = attachment hole offset to right,  
L = attachment hole offset to left

### Hole Sizes

30R / 30L- F Series
Connector hole = 2" diameter for all Flanges.
PN 30R-F1 / 30L-F1 = 11/16" bolt hole diameter.
PN 30R-F2 / 30L-F2 = 15/16" bolt hole diameter.
PN 30R-F3 / 30L-F3 = 13/16" bolt hole diameter.
PN 30R-F4 / 30L-F4 = 1-1/16" bolt hole diameter.



30R- F / 30L- F Series

### Installation Instructions

Buckingham Flanges are not supplied with fasteners (step bolts or tower bolts).

Only approved step bolts or tower bolts may be used to attach Flanges to structures. Buckingham suggests the use of galvanized fasteners (ref. ASTM A394 Type O).

The installation instructions outlined in this document show the Flange being attached using a galvanized step bolt (ref. ASTM A394 Type O).

- ◆ Prior to installation, visually inspect the Flange per the inspection section outlined in this document.
- ◆ Ensure that the support structure is capable of maintaining a 5,000 lbf. (22.2 kN) minimum shock load.
- ◆ The support structure mounting holes must be compatibly sized with the step bolt threads.
- ◆ The Flange must be attached flush with the support structure, and with the bolt hole towards the top of structure. Never mount the Flange with the plane of the connector attachment hole parallel to the ground surface.
- ◆ Install a compatible nut onto the step bolt and run to the end of threads (Fig.1).
- ◆ Insert the step bolt threads into the Flange bolt hole (not the connector attachment hole, which is larger) (Fig.1) and into the support structure hole (Fig.2).
- ◆ Insert a flat washer or lock washer onto the step bolt threads on the “back side” of the support structure.
- ◆ Thread a second nut onto the step bolt threads on the “back side” of the support structure (Fig.3).
- ◆ Tighten the nut to the appropriate torque required for the thread size.
- ◆ Test that the Flange does not move. If the Flange moves, remove it, and repeat the installation procedure (Fig.3).

30R-F / 30L-F Series (shown below)

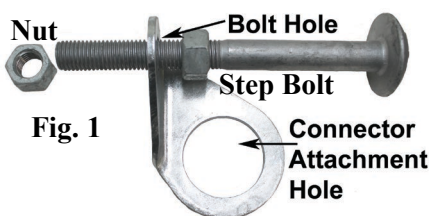


Fig. 1

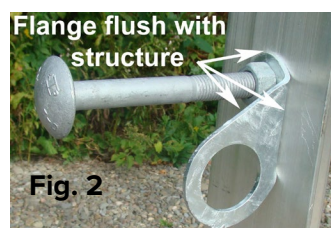


Fig. 2

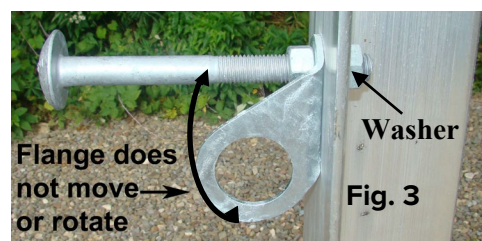


Fig. 3

## Inspection

Inspection prior to each installation should include but not be limited to:

- ◆ Visually check the entire product to ensure no cracks, corrosion, dents, or damage (especially threads) exist.
- ◆ Visually inspect to ensure no excessive wear, especially in the anchor loop area exists.

Remove from service, destroy and discard unit if it does not pass this inspection and replace immediately.

### **After installation to support structure:**

- ◆ Visually check the entire product to ensure no cracks, corrosion, dents, damage and excessive wear, especially in and around the connector attachment hole exists.
- ◆ Ensure that the connector attachment hole is properly positioned (i.e. the bottom of the attachment hole is pointing towards the ground, not parallel to the ground surface).
- ◆ Ensure that the Flange is flush with the support structure and nuts have been adequately tightened.

Remove from service, destroy and discard unit if it does not pass this inspection and replace immediately.

## Warnings

- ◆ This equipment is intended for use by properly trained professionals only.
- ◆ Manufacturer's instructions shall be provided to the user of this product. If additional copy is needed, contact Buckingham Mfg. Co. or obtain from Buckingham's website at [www.buckinghammfg.com](http://www.buckinghammfg.com).
- ◆ Completely read, understand, and follow all instructions, warnings, and guidelines pertaining to this and all associated equipment before use. Failure to do so could result in your serious injury or death.
- ◆ Employer - instruct your employees as to proper use, warnings and cautions before use of this equipment.
- ◆ Fall protection equipment, (i.e. fall arrest, work positioning, retrieval, suspension, travel restraint, etc.) should not be resold or provided to others for re-use after use by original user as assurance cannot be granted that a used product meets criteria of applicable standards and is safe for use to a subsequent user.
- ◆ Selection of products should be such that they aid the worker in the performance of their job and particular work situation. Therefore, be certain this equipment is suitable for the intended use and work environment. It should only be used as personal protection equipment. If suitability for intended use is questionable, always consult your Supervisor, Safety Director or contact Buckingham Mfg. at 1-800-937-282.
- ◆ Equipment subjected to impact loading must be immediately removed from service, destroyed, and discarded.
- ◆ Only one personal fall arrest system may be attached to each Flange at a single time.
- ◆ Fall arrest anchor points must support a minimum of 5,000 lbf. (22.2 kN) per attached worker and be independent of worker support.
- ◆ OSHA requires that impact force in a fall NOT exceed an 1800 lbf. limit with a harness. Keep connecting device slack to a minimum or use a deceleration unit to stay under these limits.
- ◆ Rig to avoid contact with structures below in a fall.
- ◆ Always keep anchor point above rear D-ring of your personal fall arrest unit.
- ◆ Always work directly under fall arrest anchor point to avoid swing fall injuries (pendulum effect).
- ◆ Only Buckingham Mfg. Co. or those people authorized in writing by Buckingham Mfg. Co. may make repairs / modifications to this equipment.

- ◆ Use PPE equipment only for the specific purpose for which it is designed and intended, Step bolts are for personal use only.  
NOT for hoisting.
- ◆ When utilizing the anchor point of this product, it should only be used with a compatible sized locking snap hook / carabiner meeting applicable OSHA requirements.
- ◆ Ensure there is no pressure on the snap hook locking mechanism sufficient to depress it as this will, due to its length, render it incompatible with currently designed D-rings and make it very susceptible to rollout.
- ◆ Always visually check that the snap hook/carabiner freely engages D-ring or anchor point and the keeper / gate is completely closed with each use. Never rely solely on the feel or sound of the snap hook / carabiner engaging.
- ◆ Ensure snap hooks / carabiners are positioned so that their keepers / gates are never load bearing.
- ◆ Avoid contact of this product with electrical hazards, moving machinery, chemicals, high temperature surfaces, welding, or other heat sources which may damage the material.
- ◆ Always visually check the entire product for any cracks, corrosion, dents, or damage (especially threads). If any defects are found, immediately destroy the product to prohibit its use.
- ◆ Ensure all step bolts and Flanges are properly secured to the support structure according to the instructions outlined in this document.
- ◆ Product covered under these instructions / warnings should not be resold / redistributed or reused after use by original user.

## **Storage**

- ◆ Proper maintenance and storage of your equipment will prolong its useful life and contribute toward its performance.
- ◆ Flanges not in use must be stored in a clean dry area and should be protected from dirt, chemicals and moisture in closed containers.
- ◆ Flanges that accumulate rust resulting from plant or job-site conditions should not be used until inspected and approved for use.  
by a competent person.
- ◆ When removed from storage, the Flanges MUST be inspected per the above inspection criteria prior to installation.

**NOTE:** Ensure proper fit / size of product before use. This product cannot be returned unless it is in new / unused condition.

## STATEMENT of OBSOLESCENCE:

Precise “useful life expectancy” or “shelf life” for this product is not specified, as the degree of use, conditions of use, and the degree of care and storage determines useful life. All users maintain responsibility to select proper equipment for the job, be properly trained in its use, and ensure all personnel support equipment passes inspection before each use. Upon evidence of defects, damage or deterioration, all equipment shall be removed from service immediately and tagged or marked as unusable or destroyed. Additionally, all equipment shall be inspected on a regular basis not to exceed one year by a Competent Person, as defined by OSHA/ANSI, to verify that the equipment is safe for use. In the event of any question or concern regarding the condition of such equipment, users shall remove the equipment from service for further inspection. All users must comply with OSHA/ANSI/ASTM standards prior to and in using such equipment. For more information regarding safe and appropriate use of equipment, please contact Buckingham Manufacturing at 1-800-937-2825.

## INTERNATIONAL USERS:

Notwithstanding the above, please know that certain international jurisdictions require manufacturers of equipment to provide customers with a maximum useful lifespan (sometimes referred to as a “Statement of Obsolescence”). To the extent required, Buckingham personal protective equipment manufactured from synthetic fiber materials including but not limited to items such as webbing and/or rope are subject to a maximum useful lifespan of ten (10) years from the date of manufacture. As stated above proper usage, storage, maintenance, and care impacts the useful lifespan of equipment. Extreme circumstances may require that product must be retired after only one use. This statement is made in conformance and compliance with BS EN 365:2004. International users must ensure that product inspections are completed by Competent Persons as defined by international standards including but not limited to British Standard (“BS”). If equipment fails any inspections, it must be immediately withdrawn from service and destroyed. For more information regarding safe and appropriate use of equipment, please contact Buckingham Manufacturing at 1-800-937-2825.

## OUR GUARANTEE:

We guarantee the equipment we manufacture to be free from defects in material and workmanship. We will repair any equipment deemed to be defective which is returned to us by the original purchaser. However, this guarantee is void if any product is changed or altered in any way, or if the product is used in a manner other than for which it is intended. This express guarantee supersedes all other expressed or implied guarantees, obligations or liabilities. There are no implied warranties of merchantability or fitness for a particular purpose and as such, all implied warranties are specifically disclaimed.

## LIMITATION ON LIABILITY:

In no event will Buckingham or buyer be liable to the other for lost revenues, lost profits or any other indirect, consequential, special or punitive losses or damages, however caused, whether in action for breach of contract, strict liability, tort, or otherwise, even if advised of the possibility of such losses or damages. In no event will Buckingham’s liability exceed the total amount paid by the buyer to Buckingham for the product or equipment giving rise to such claim(s).

Please see other terms and conditions relating to this product at <https://buckinghammfg.com/terms-conditions/>

## REGISTRATION:

Before use of the product, ensure to register and confirm the product at [www.buckinghammfg.com/register](http://www.buckinghammfg.com/register).

## **BUCKINGHAM MFG. CO., INC.**

BINGHAMTON, NY

1-800-937-2825

[www.buckinghammfg.com](http://www.buckinghammfg.com)

Information contained in these written instructions supersedes all other information (written, audio, video etc.) produced by Buckingham Mfg. prior to the revision date of this document.