

BUCKINGHAM MFG.

PN 488PR – SuperSqueeze Rescue Trainer (with replacement rope) Instructions / Warnings

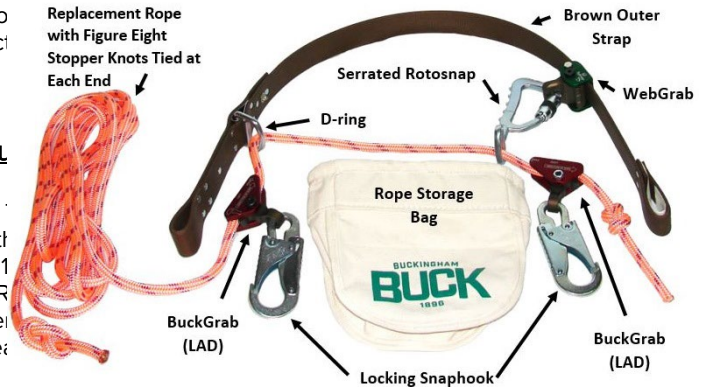
Warning: Do not use this product if you cannot understand and follow the instructions and warnings that come with it and complete all necessary functions.

This device is intended for Rescue Training only. It is **not** intended for human support. This device is only to be used with the Buckingham Rescue Buck PN 694 or similar devices, (Fig. 2 or 3) never with a human.

Read and understand these instructions, warnings, and all labels attached to and packed with this product. 488 Series SuperSqueeze instructions must be used in conjunction with the instructions outlined below. If an additional copy is required, you may obtain one from the Buckingham website (www.buckinghammfg.com) or by contacting Buckingham Customer Service at 1-800-937-2825.

ATTACHMENT (Reference the 488 SuperSqueeze Instr)

1. Attach each locking snaphook of the SuperSqueeze Rescue Trainer to the D-ring of the Linemen's body belt (Ref. Fig. 3) (Ensure the figure eight stopper knot is tied at each end of the rope (Fig. 1)
2. Attach the rope storage bag/ excess rope to the side of the Rescue Buck nearest the D-ring of the SuperSqueeze Rescue Trainer
3. Ensure the area on the ground below the Rescue Buck is cleared and raise it to the desired height.
4. Attach the SuperSqueeze Rescue Trainer to the pole and properly adjust (i.e. the same as that outlined for the SuperSqueeze).



PN 488PR SuperSqueeze Rescue Trainer
Fig. 1

Note: Ensure rope is properly threaded into the BuckGrabs (LAD) (Ref. Fig. 4 or 5), the 'POLE' arrows shown on its body face towards the pole and the attached snaphook gates face outward (see Fig. 4a -5b)

RESCUE:

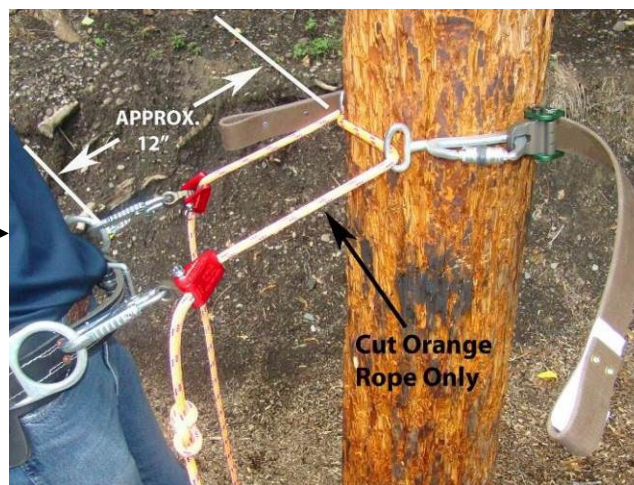
1. Ensure the area on the ground below the suspended is cleared and secured (Never stand under a suspended object).
2. Properly attach a secondary suspension device and / or lowering device to the Rescue Buck. Ensure all slack is removed from the secondary suspension device.
3. Cut the **Orange Rope Only** on the SuperSqueeze Rescue Trainer as shown in Fig. 3. Note: once rope is cut, the Brown Outer Strap will fall from the pole and to the ground below it. (Note: Extreme caution must be taken when practicing or performing hurt man rescue as the rescuer may need to position their SuperSqueeze / EZSqueeze, near the victims. Always visually ensure the strap you are about to cut is that of the Rescue Buck's unit not yours. Keep your unit as far from the Rescue Buck's as possible.
4. Lower the Rescue Buck to the ground and resume rescue training exercise.



Fig. 2

Fig. 3

Rescue Buck
(Rescue Randy Shown)



REPLACEMENT ROPE CHANGE OUT: (Replacement Rope for Use With This Product Must Only Be That Supplied By Buckingham Mfg. Co. Use PN 488AR series only). Alternate diameter or rope types have not been tested to ensure they properly function with this device and may allow the rescue device to unexpectedly fall from the pole.

- The SuperSqueeze Rescue Trainer can be used in either a right or left hand orientation. However, for proper rope replacement / rethreading, the rope bag must be placed on the same side of the Rescue Trainer as the D-ring (Fig. 4 right handed orientation), (Fig. 5 left handed orientation).
- When training is complete (rope has been cut) remove the cut rope section from the BuckGrabs (LAD).
- Tape the cut end of the rope to prevent it from unraveling when feeding through the BuckGrab (LAD).
- Properly feed the cut end of the rope through all applicable hardware (Fig. 4 or 5) and in the same direction as the rope threading arrows etched on the frame (Fig. 4a - 5b as applicable).
- To re-thread complete unit with replacement rope, follow the rope threading arrows etched on frame and feed new rope through 1.) BuckGrab (LAD), 2.) D-ring, 3.) Serrated Rotosnap stirrup and 4.) 2nd. BuckGrab (LAD) as shown in Fig. 4 or 5. Ensure the BuckGrabs (LAD) are properly oriented with the arrow on the body facing towards the pole (Fig. 4b & 5b) and snap hooks gates face outward (Fig. 4 & 5).
- Ensure a figure eight stopper knot is tied at each end of the rope (Fig. 4, 5 & 6).

RIGHT HANDED ORIENTATION

Arrows indicate rope threading direction when the rope bag is on the left side

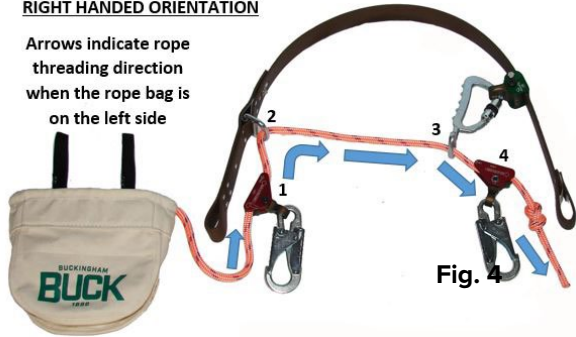


Fig. 4

LEFT HANDED ORIENTATION

Arrows indicate rope threading direction when the rope bag is on the right side

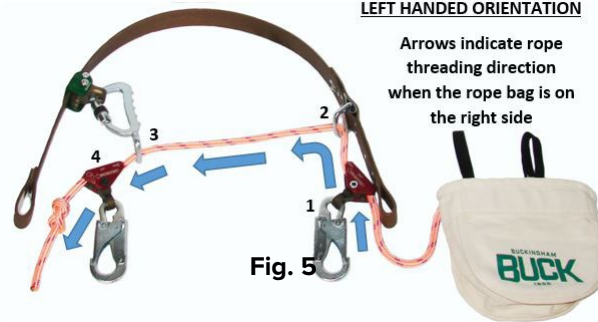


Fig. 5



Fig. 4a

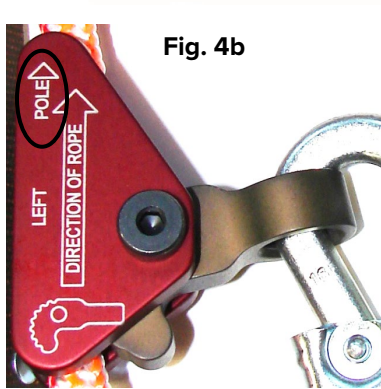


Fig. 4b



Fig. 5a

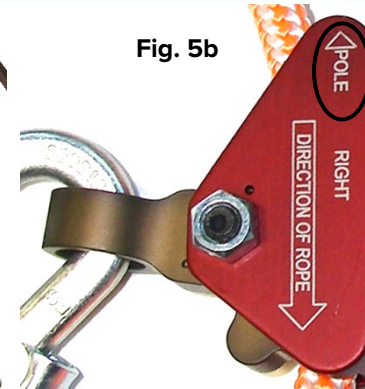


Fig. 5b

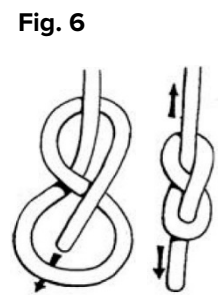


Fig. 6

WARNINGS:

- Completely read, understand, and follow all instructions, warnings, and guidelines pertaining to this and all associated equipment prior to use. Failure to do so could result in serious injury or death.
- This equipment is intended for use by properly trained professionals only.
- Please consult with your physician prior to using this product. Do not use this product under the influence of drugs or alcohol.
- It is the user's responsibility to ensure that they are properly trained in the use, care, and limitations of this product.
- This device is intended to be used for rescue training only. It is not intended for any other purpose.
- Never disconnect hardware while suspended without a secondary means of support.
- When performing a Hurt Man Rescue, be aware of your device's position / placement in relation to the Rescue Buck's device. Visually ensure the strap you are about to cut is that of the Rescue Buck's device, not yours.
- Prior to use, visually check the Orange Rope to ensure it is free from cuts from previous trainings and is properly threaded through all applicable hardware as shown above.
- Ensure the ground below the area of intended rescue training is clear and secured.
- Only Buckingham Mfg. Co. or those people authorized in writing by Buckingham Mfg. may make repairs to this equipment.
- Product covered under these instructions / warnings should not be resold / redistributed or re-used after use by original user.

INSPECTION: Inspect prior to each use, inspection should include but not be limited to the following:

1. All hardware and connecting devices are clean, functioning properly, free of cracks, deformation, burrs, excessive wear, or modifications. Also, that:
 - Snaphooks meet the criteria outlined on the Locking Snaphook Inspection Procedure (located on the last page of this document).
 - BuckGrabs (LAD) are properly attached, in the correct orientation and rope is properly threaded.
2. All straps / ropes are free from kinks, knots, cuts, cracks, burns, abrasions, broken strands, excessive wear, and chemical exposure.
3. Both strap and rope are not worn to the point of showing the red warning center of the Outer Strap or the white core of the Inner Rope.
4. Rope used is that supplied by Buckingham and intended specifically for use with this product.

Remove from service, destroy, and discard unit if it does not pass this inspection and replace immediately.

CLEANING:

Proper maintenance and storage of your equipment will prolong its useful life and contribute toward its performance. The SuperSqueeze Training Rescue Device should be cleaned with water and mild soap [a dish washing soap that removes grease (i.e. Dawn)] and be allowed to dry thoroughly without using excessive heat. **NOTE:** This product cannot be returned unless it is in new / unused condition.

LOCKING SNAPHOOK INSPECTION PROCEDURE

- THOROUGHLY INSPECT EACH SNAPHOOK BEFORE EACH USE TO ENSURE:
 - > Rivets are not loose and have adequate head on both sides.
 - > Snaphook is not cracked, corroded, or distorted so that the keeper does not properly seat in the bill.
 - > Keeper is not bent or distorted such that it does not properly seat in the bill without binding.
 - > Keeper and lock mechanism are free of burrs.
 - > Keeper and lock mechanism and rivet attachment points are properly lubricated.
 - > Keeper extends into the bill, 3/16" min. (Fig. 7).
 - > Keeper and lock mechanism springs are properly seated and aligned.

3/16" MIN.

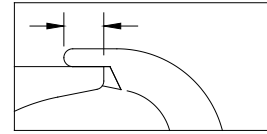


Fig. 7

- LUBRICATE lock mechanism and keeper on both sides AT LEAST WEEKLY or AS OFTEN AS REQUIRED to maintain smooth operation (no binding) with light weight lubricant such as WD-40®.
- LOCKING SNAPHOOKS FEATURE A SELF-CLOSING, SELF-LOCKING MECHANISM WHICH REMAINS CLOSED UNTIL UNLOCKED AND PRESSED OPEN FOR CONNECTION OR DISCONNECTION.
- > When the lock mechanism is not activated, the keeper should remain securely locked when depressed.

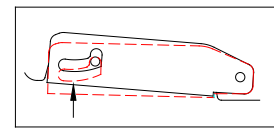


Fig. 8

> Depress the lock mechanism. It should move downward easily and spring back to its original position without binding or sticking (Fig. 8).

> Depress the keeper and lock mechanism simultaneously, (Fig. 9) checking for:

- >> ease of movement — no binding
- >> keeper unlocks completely
- >> keeper opens completely, moves through its full range of motion smoothly, and returns to its original position within the bill.

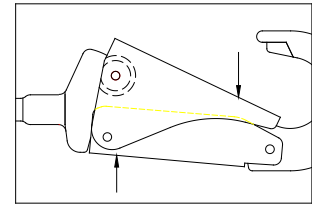


Fig. 9

> Move the keeper side to side to check for excessive side movement (Fig. 10). Side movement is excessive if the keeper hangs up on the tab of the split bill (Fig. 11).

- **NOTE:** MISUSE / ABUSE OF THIS PRODUCT COULD LEAD TO IMPROPER FUNCTIONING WITH RISK OF INJURY!!! NEVER ATTEMPT TO ALTER OR MODIFY A SNAPHOOK TO BYPASS THE LOCK MECHANISM!!!

Fig.10

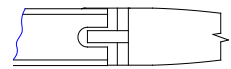
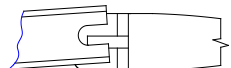
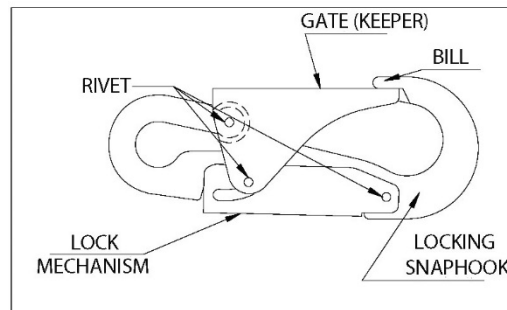


Fig. 11



Excessive keeper side movement. Keeper hangs up on tab of the split bill



LOCKING SNAPHOOK (LINKLESS CONNECTION)

STATEMENT of OBSOLESCENCE:

Precise “useful life expectancy” or “shelf life” for this product is not specified, as the degree of use, conditions of use, and the degree of care and storage determines useful life. All users maintain responsibility to select proper equipment for the job, be properly trained in its use, and ensure all personnel support equipment passes inspection before each use. Upon evidence of defects, damage or deterioration, all equipment shall be removed from service immediately and tagged or marked as unusable or destroyed. Additionally, all equipment shall be inspected on a regular basis not to exceed one year by a Competent Person, as defined by OSHA/ANSI, to verify that the equipment is safe for use. In the event of any question or concern regarding the condition of such equipment, users shall remove the equipment from service for further inspection. All users must comply with OSHA/ANSI/ASTM standards prior to and in using such equipment. For more information regarding safe and appropriate use of equipment, please contact Buckingham Manufacturing at 1-800-937-2825.

INTERNATIONAL USERS:

Notwithstanding the above, please know that certain international jurisdictions require manufacturers of equipment to provide customers with a maximum useful lifespan (sometimes referred to as a “Statement of Obsolescence”). To the extent required, Buckingham personal protective equipment manufactured from synthetic fiber materials including but not limited to items such as webbing and/or rope are subject to a maximum useful lifespan of ten (10) years from the date of manufacture. As stated above proper usage, storage, maintenance, and care impacts the useful lifespan of equipment. Extreme circumstances may require that product must be retired after only one use. This statement is made in conformance and compliance with BS EN 365:2004. International users must ensure that product inspections are completed by Competent Persons as defined by international standards including but not limited to British Standard (“BS”). If equipment fails any inspections, it must be immediately withdrawn from service and destroyed. For more information regarding safe and appropriate use of equipment, please contact Buckingham Manufacturing at 1-800-937-2825.

OUR GUARANTEE:

We guarantee the equipment we manufacture to be free from defects in material and workmanship. We will repair any equipment deemed to be defective which is returned to us by the original purchaser. However, this guarantee is void if any product is changed or altered in any way, or if the product is used in a manner other than for which it is intended. This express guarantee supersedes all other expressed or implied guarantees, obligations or liabilities. There are no implied warranties of merchantability or fitness for a particular purpose and as such, all implied warranties are specifically disclaimed.

LIMITATION ON LIABILITY:

In no event will Buckingham or buyer be liable to the other for lost revenues, lost profits or any other indirect, consequential, special or punitive losses or damages, however caused, whether in action for breach of contract, strict liability, tort, or otherwise, even if advised of the possibility of such losses or damages. In no event will Buckingham’s liability exceed the total amount paid by the buyer to Buckingham for the product or equipment giving rise to such claim(s).

Please see other terms and conditions relating to this product at <https://buckinghammfg.com/terms-conditions/>

REGISTRATION:

Before use of the product, ensure to register and confirm the product at www.buckinghammfg.com/register.

BUCKINGHAM MFG.
Binghamton, NY
www.buckinghammfg.com
1-800-937-2825