

BUCKINGHAM MFG.

PN 38N99E – Pole Top Rescue Training Strap Instructions / Warnings

Warning: Do not use this product if you cannot understand and follow the instructions and warnings that come with it and complete all necessary functions.

Pole top rescue requires practice to be proficient in a real life situation. Product number 38N99E (Fig. 1) offers the ability to practice without the expense of using a complete positioning strap. During practice the only part that is cut is the 12" 6-ply neoprene Replacement Strap that can be used up to 3 times (see Fig.4) and is less costly than cutting a positioning strap. This also simulates the difficulty in cutting the positioning strap in a real emergency. The other components of the system may be reused.

This device is intended for Rescue Training only. It is **not** intended for human support. This device is only to be used on the Buckingham Rescue Buck P/N 694 (Fig. 2) or similar devices, **never on a human**.

Read and understand these instructions, warnings and all labels attached to and packed with this product. Body Belt / Positioning Strap instructions (PN 230193) must be used in conjunction with the instructions outlined below. If a copy is required, you may obtain one from the Buckingham website (www.buckinghammfg.com) or by contacting Buckingham Customer Service at 1-800-937-2825.

ATTACHMENT:

1. Attach a suitable linemen's body belt to the Rescue Buck.
2. Attach the Pole Top Rescue Training Strap around the pole and to the body belt.
3. Properly adjust the Pole Top Rescue Training Strap.
4. Raise the Rescue Buck to the desired height and readjust.

RESCUE:

1. Ensure the area on the ground below the suspended Rescue Buck is cleared and secured.
2. Properly attach a secondary suspension device and or lowering device to the Rescue Buck. Ensure all slack is removed from the secondary suspension device.
3. Cut either one of the **Replacement Straps** (PN 38A) of the Pole Top Rescue Training Strap as shown in Fig. 3. NOTE: Cut Replacement Straps at centerline between buckle holes as shown. There must be a minimum of 1" of material from the edge of hole to end of strap.
4. Lower the Rescue Buck to the ground and resume training exercise.

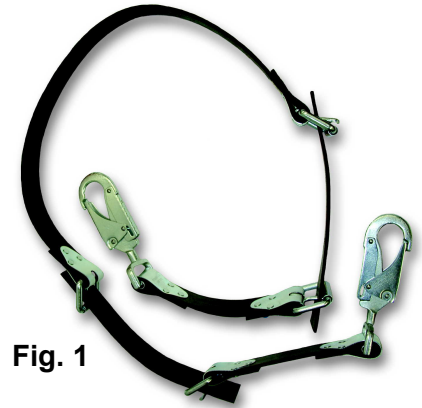


Fig. 1



Fig. 2



Fig. 3

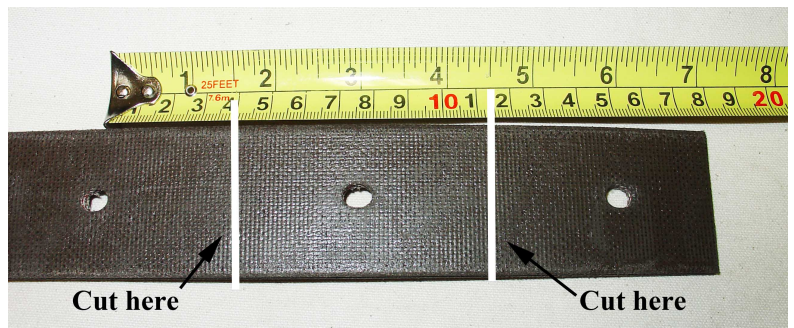


Fig. 4

REPLACEMENT STRAP CHANGE OUT:

- When training is complete (straps have been cut) remove the Replacement straps by detaching the tongue buckles at each end of the strap.
- Attach new replacement straps by fastening the tongue buckles at each end of the strap.

Note: The cut resistant straps are each reinforced with a piece of strip steel to prevent unintentional cutting (Fig. 5).

WARNINGS:

- Read, understand, and follow all instructions and warnings before using this equipment. Failure to do so could result in your serious injury or death.
- This equipment is intended for use by properly trained professionals only.
- Please consult with your physician prior to using this product. Do not use this product under the influence of drugs or alcohol.
- It is the users responsibility to ensure that they are properly trained in the use, care and limitations of this product.
- This device is intended to be used for training only. It is not intended for any other purpose.
- Never disconnect body belt hardware while suspended without a secondary means of support.
- Prior to use visually check the Replacement Straps to ensure they are free from cuts from previous trainings.
- Only Buckingham Mfg. Co. or those people authorized in writing by Buckingham Mfg. may make repairs to this equipment.
- Product covered under these instructions / warnings should not be resold / redistributed or re-used after use by original user.

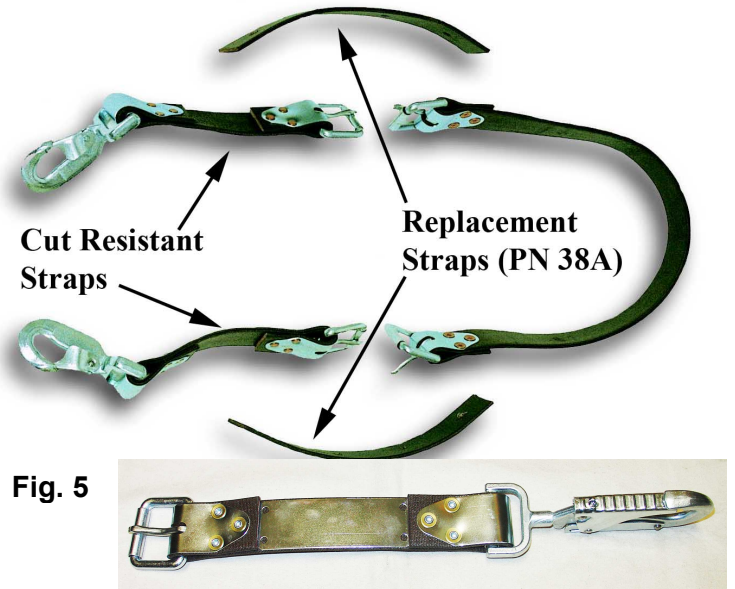


Fig. 5

INSPECTION: Inspect prior to each use, inspection should include but not be limited to the following:

1. All hardware and connecting devices are clean and functioning properly, are free of cracks, deformation, burrs, excessive wear, or modifications. Also that:
 - Snaphooks: see Locking Snaphook Inspection Procedure (located on the last page of this document).
 - Metal Strap End Clip Rivets are properly peened and tight, and hardware is secured to the strap.
2. All straps are free from kinks, knots, cuts, cracks, burns, abrasions, broken strands, excessive wear and chemical exposure.
3. Straps are not worn to the point of showing the red warning center and buckles are not bent and function properly.

Remove from service, destroy and discard unit if it does not pass this inspection and replace immediately.

CLEANING: Proper maintenance and storage of your equipment will prolong its useful life and contribute toward its performance. The Pole Top Rescue Training Strap should be cleaned with water and mild soap (a dish washing soap that removes grease (i.e. Dawn)) and be allowed to dry thoroughly without using excessive heat.

STORAGE: Product should be stored in a clean and dry environment out of direct sunlight and away from extreme heat. Do not store near solvents or corrosive chemicals or at extreme temperatures.

NOTE: This product cannot be returned unless it is in new / unused condition.

LOCKING SNAPHOOK INSPECTION PROCEDURE

- THOROUGHLY INSPECT EACH SNAPHOOK BEFORE EACH USE TO ENSURE:
 - > Rivets are not loose and have adequate head on both sides.
 - > Snaphook is not cracked, corroded or distorted so that the keeper does not properly seat in the bill.
 - > Keeper is not bent or distorted such that it does not properly seat in the bill without binding.
 - > Keeper and lock mechanism are free of burrs.
 - > Keeper and lock mechanism and rivet attachment points are properly lubricated. 3/16" MIN.
 - > Keeper extends into the bill, 3/16" min. (Fig. 6)
 - > Keeper and lock mechanism springs are properly seated and aligned.
 - > Roller turns freely and is not distorted.
- LUBRICATE lock mechanism and keeper on both sides AT LEAST WEEKLY or AS OFTEN AS REQUIRED to maintain smooth operation (no binding) with light weight lubricant such as WD-40®.
- LOCKING SNAPHOOKS FEATURE A SELF-CLOSING, SELF-LOCKING MECHANISM WHICH REMAINS CLOSED UNTIL UNLOCKED AND PRESSED OPEN FOR CONNECTION OR DISCONNECTION.
 - > When the lock mechanism is not activated, the keeper should remain securely locked when depressed.
 - > Depress the lock mechanism. It should move downward easily and spring back to its original position without binding or sticking (Fig. 7).
 - > Depress the keeper and lock mechanism simultaneously, (Fig. 8), checking for:
 - >> ease of movement — no binding
 - >> keeper unlocks completely
 - >> keeper opens completely, moves through its full range of motion smoothly, and returns to its original position within the bill.
 - >> Move the keeper side to side to check for excessive side movement (Fig. 9). Side movement is excessive if the keeper hangs up on the tab of the split bill (Fig. 10).
- **NOTE:** MISUSE / ABUSE OF THIS PRODUCT COULD LEAD TO IMPROPER FUNCTIONING WITH RISK OF INJURY!!! NEVER ATTEMPT TO ALTER OR MODIFY A SNAPHOOK TO BYPASS THE LOCK MECHANISM!!!

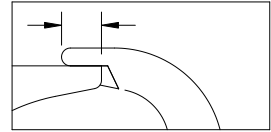


Fig. 6

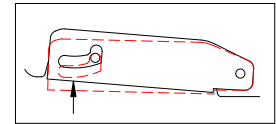


Fig. 7

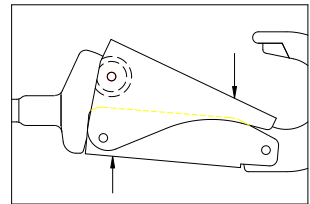
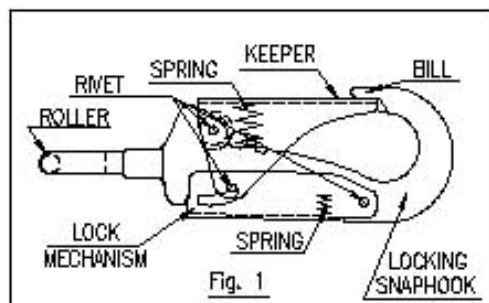
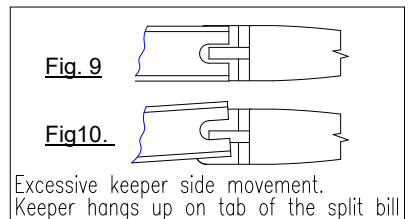


Fig. 8



LOCKING POSITIONING STRAP SNAPHOOK

STATEMENT of OBSOLESCENCE:

Precise “useful life expectancy” or “shelf life” for this product is not specified, as the degree of use, conditions of use, and the degree of care and storage determines useful life. All users maintain responsibility to select proper equipment for the job, be properly trained in its use, and ensure all personnel support equipment passes inspection before each use. Upon evidence of defects, damage or deterioration, all equipment shall be removed from service immediately and tagged or marked as unusable or destroyed. Additionally, all equipment shall be inspected on a regular basis not to exceed one year by a Competent Person, as defined by OSHA/ANSI, to verify that the equipment is safe for use. In the event of any question or concern regarding the condition of such equipment, users shall remove the equipment from service for further inspection. All users must comply with OSHA/ANSI/ASTM standards prior to and in using such equipment. For more information regarding safe and appropriate use of equipment, please contact Buckingham Manufacturing at 1-800-937-2825.

INTERNATIONAL USERS:

Notwithstanding the above, please know that certain international jurisdictions require manufacturers of equipment to provide customers with a maximum useful lifespan (sometimes referred to as a “Statement of Obsolescence”). To the extent required, Buckingham personal protective equipment manufactured from synthetic fiber materials including but not limited to items such as webbing and/or rope are subject to a maximum useful lifespan of ten (10) years from the date of manufacture. As stated above proper usage, storage, maintenance, and care impacts the useful lifespan of equipment. Extreme circumstances may require that product must be retired after only one use. This statement is made in conformance and compliance with BS EN 365:2004. International users must ensure that product inspections are completed by Competent Persons as defined by international standards including but not limited to British Standard (“BS”). If equipment fails any inspections, it must be immediately withdrawn from service and destroyed. For more information regarding safe and appropriate use of equipment, please contact Buckingham Manufacturing at 1-800-937-2825.

OUR GUARANTEE:

We guarantee the equipment we manufacture to be free from defects in material and workmanship. We will repair any equipment deemed to be defective which is returned to us by the original purchaser. However, this guarantee is void if any product is changed or altered in any way, or if the product is used in a manner other than for which it is intended. This express guarantee supersedes all other expressed or implied guarantees, obligations or liabilities. There are no implied warranties of merchantability or fitness for a particular purpose and as such, all implied warranties are specifically disclaimed.

LIMITATION ON LIABILITY:

In no event will Buckingham or buyer be liable to the other for lost revenues, lost profits or any other indirect, consequential, special or punitive losses or damages, however caused, whether in action for breach of contract, strict liability, tort, or otherwise, even if advised of the possibility of such losses or damages. In no event will Buckingham’s liability exceed the total amount paid by the buyer to Buckingham for the product or equipment giving rise to such claim(s).

Please see other terms and conditions relating to this product at <https://buckinghammfg.com/terms-conditions/>

REGISTRATION:

Before use of the product, ensure to register and confirm the product at www.buckinghammfg.com/register.

BUCKINGHAM MFG. CO., INC.

Binghamton, NY

1-800-937-2825

www.buckinghammfg.com